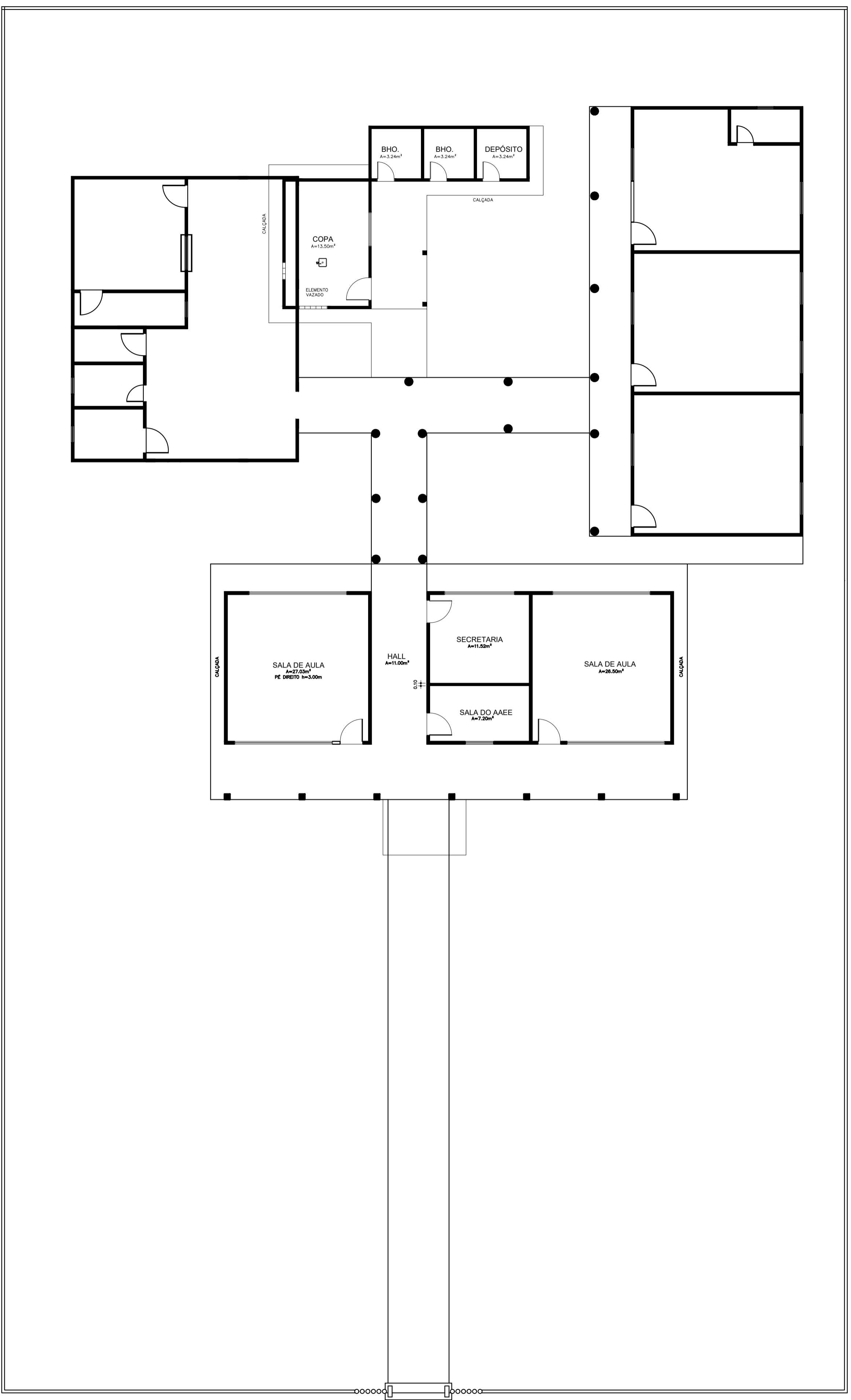
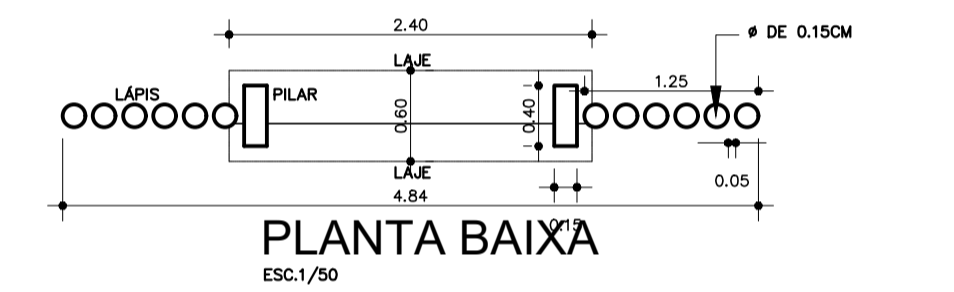
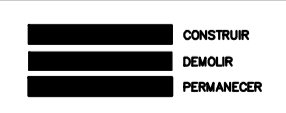


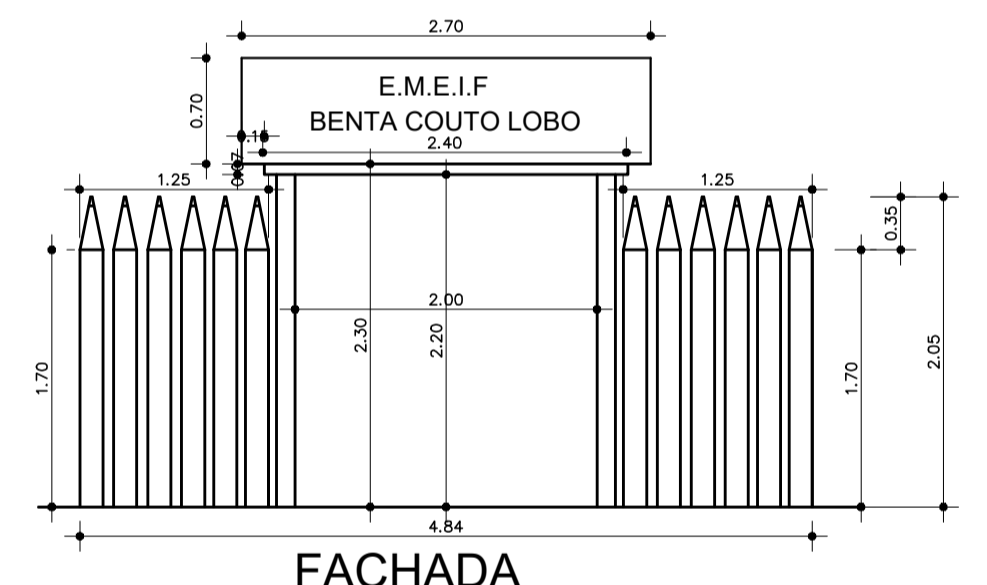
1 PLANTA BAIXA-EXISTENTE -ANANIM
ESC.1/75



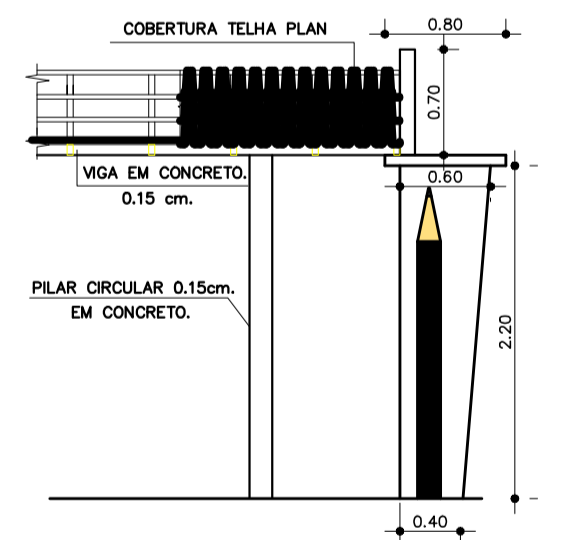
2 PLANTA CONVENCIONADA- ANANIM
ESC.1/75



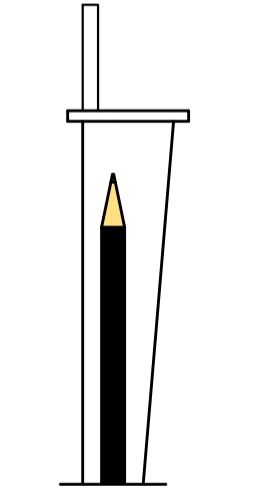
PLANTA BAIXA
ESC.1/50



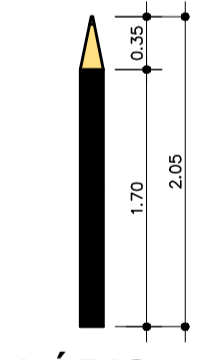
FACHADA
ESC.1/50



CORTE
ESC.1/50



LAYOUT
ESC.1/50



LÁPIS
ESC.1/50

PREFEITURA MUNICIPAL CURUÇÁ - PARÁ			
PROJETO	ARQUITETÔNICO ESCOLA JULIA SANTANA ANANIM	CONTEÚDO	PLANTA EXISTENTE PLANTA CONVENCIONADA DETALHE DO PORTAL
LOGOMARCA DA GESTÃO	PREFEITURA DE CURUÇÁ - PA CNPJ 06.011.959/0001-52	ENG. RESP. ART.	ESCALA
	PROPRIETÁRIO DO PROJETO/SOC. DE OBRAS	ENG. C. ASSIA CRISTINA S. MARRAS CREA PA 151722/PA	INDICADO
	ENY VICTOR FADU MODESTO BORGES SECRETÁRIO MUNICIPAL DE OBRAS E TRANSPORTES CREA PA 151722/PA		DATA
			NOVEMBRO/2022
			FOLHA
			ARQ-01/03
			PROJETA
			MARCO ANTONIO SILVA